

FLOOR PLAN INFORMATION

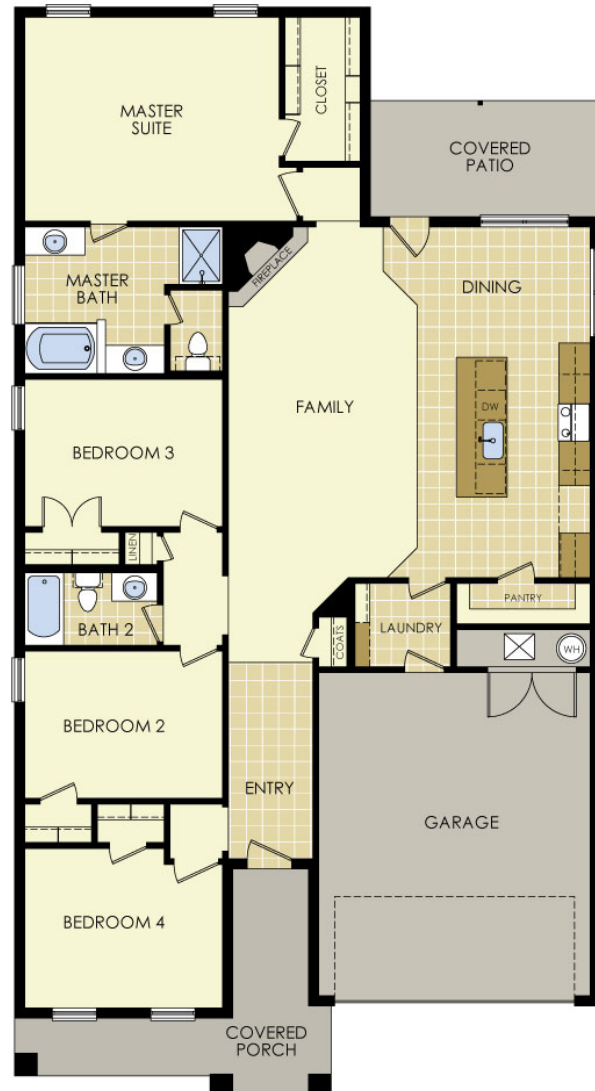
The MITZY
1,960 SQ FT

FEATURES

- 4 Bedrooms
- 2 Bathrooms
- Large Front Porch
- Covered Back Patio
- Corner Fireplace
- Kitchen Island
- Large Walk-In Pantry
- Tile Backsplash in Kitchen & Bathroom
- Kohler® Plumbing Fixtures
- Maytag® Kitchen Appliances



The Mitzy is illustrated above with a 6/12 roof pitch, decorative coach lights and address stone.



BETENBOUGH
HOMES®

Amarillo | Lubbock | Midland | Odessa

BETENBOUGH.COM   

Pictured elevation and floor plan are a rendering and may vary slightly from actual home. Betenbough Homes reserves the right to make changes to floor plans, materials, products, features, and upgrades without notice or prior obligation. Availability of landscaping packages will depend on community. Flower bed not an option.

© Copyright 2010 Betenbough Homes. Specifications and pricing subject to change without notification. Rev 1/17 