

1,700 SQUARE FOOT FAMILY

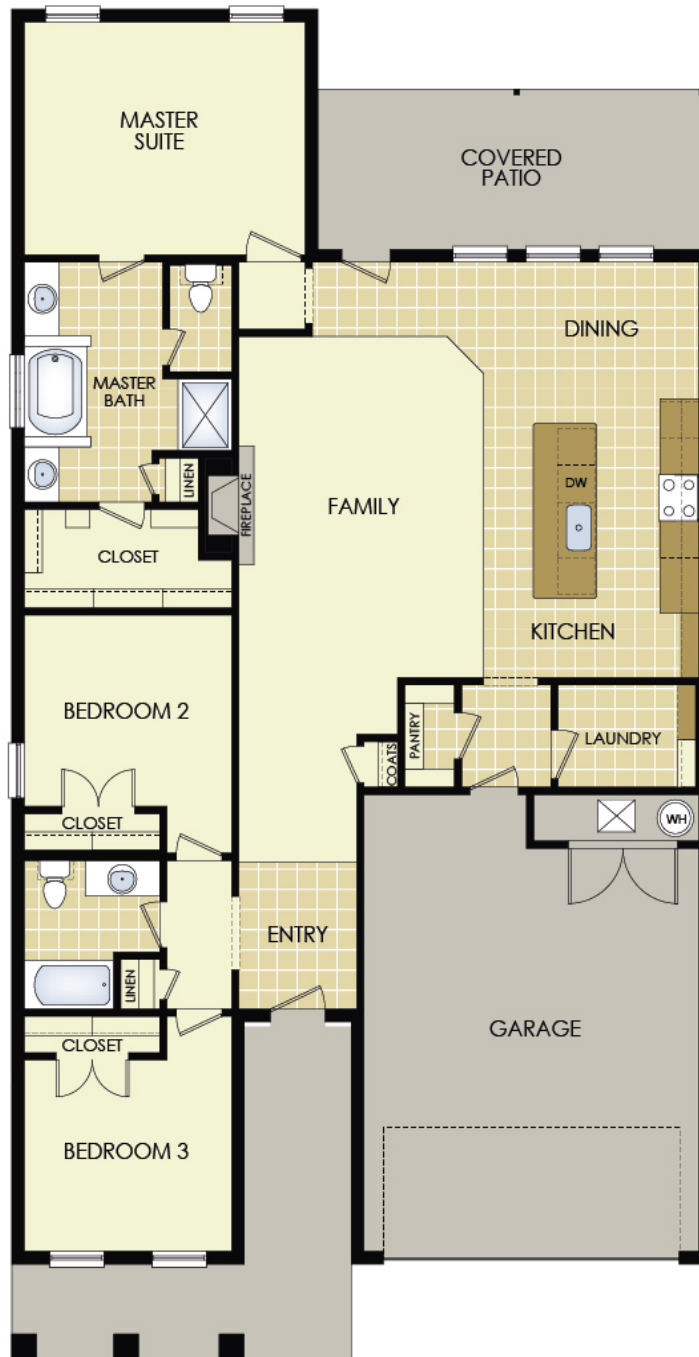
— Kitchen Peninsula —



The Carmi is illustrated above with a dormer window, brick and stucco gables, decorative coach lights, and address stone.



The Nikki is illustrated above with a dormer window, window shutters, covered front porch, decorative coach lights, and address stone.



BETENBOUGH  HOMES®

Amarillo | Lubbock | Midland | Odessa

BETENBOUGH.COM 

Pictured elevation and floor plan are a rendering and may vary slightly from actual home. Bettenbough Homes reserves the right to make changes to floor plans, materials, products, features, and upgrades without notice or prior obligation. Availability of landscaping packages will depend on community. Flower bed not an option.

© Copyright 2010 Bettenbough Homes. Specifications and pricing subject to change without notification. Rev 5/18

