

FLOOR PLAN INFORMATION

The JADE

1,655 SQ FT

FEATURES

- 3 Bedrooms
- 2 Bathrooms
- Two-Car Garage
- Corner Fireplace
- Grand Master Suite
- Large Garden Tub
- Covered Entry & Back Patio
- Granite Countertops & Vanities
- Kohler® Plumbing Fixtures
- Maytag® Kitchen Appliances
- Recessed Lighting in Kitchen
- Tile Backsplash in Kitchen & Bathroom



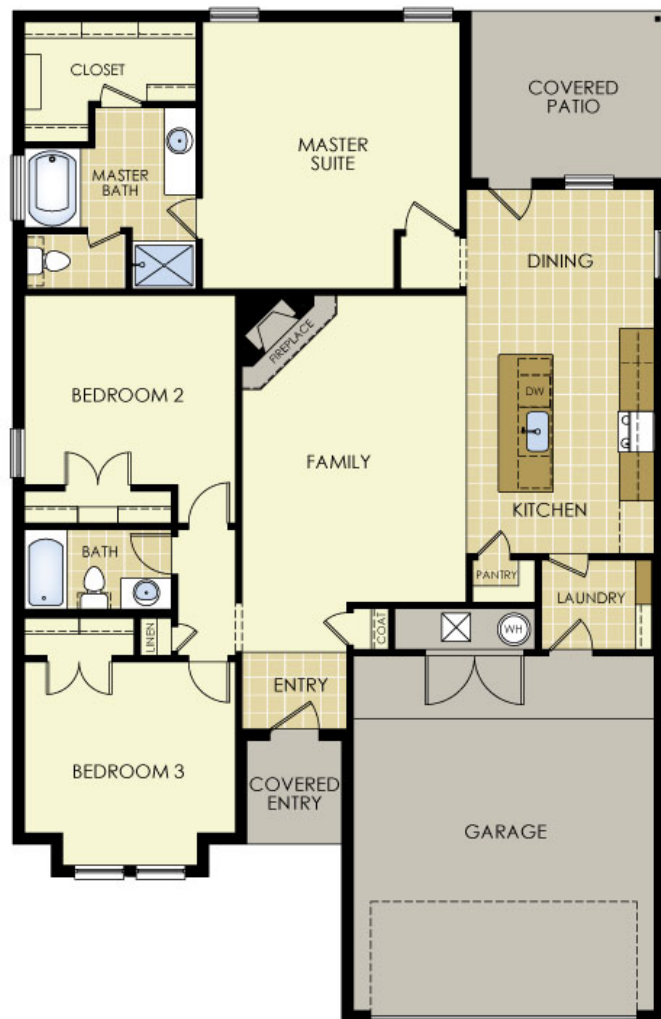
BETENBOUGH
HOMES®

Amarillo | Lubbock | Midland | Odessa

BETENBOUGH.COM   



The Jade floor plan is illustrated above with a 6/12 pitch, dormer windows, decorative coach lights and address stone.



Pictured elevation and floor plan are a rendering and may vary slightly from actual home. Bettenbough Homes reserves the right to make changes to floor plans, materials, products, features, and upgrades without notice or prior obligation. Availability of landscaping packages will depend on community. Flower bed not an option.

© Copyright 2010 Bettenbough Homes. Specifications and pricing subject to change without notification. Rev 1/18 