

FLOOR PLAN INFORMATION

NEW LADY 2603

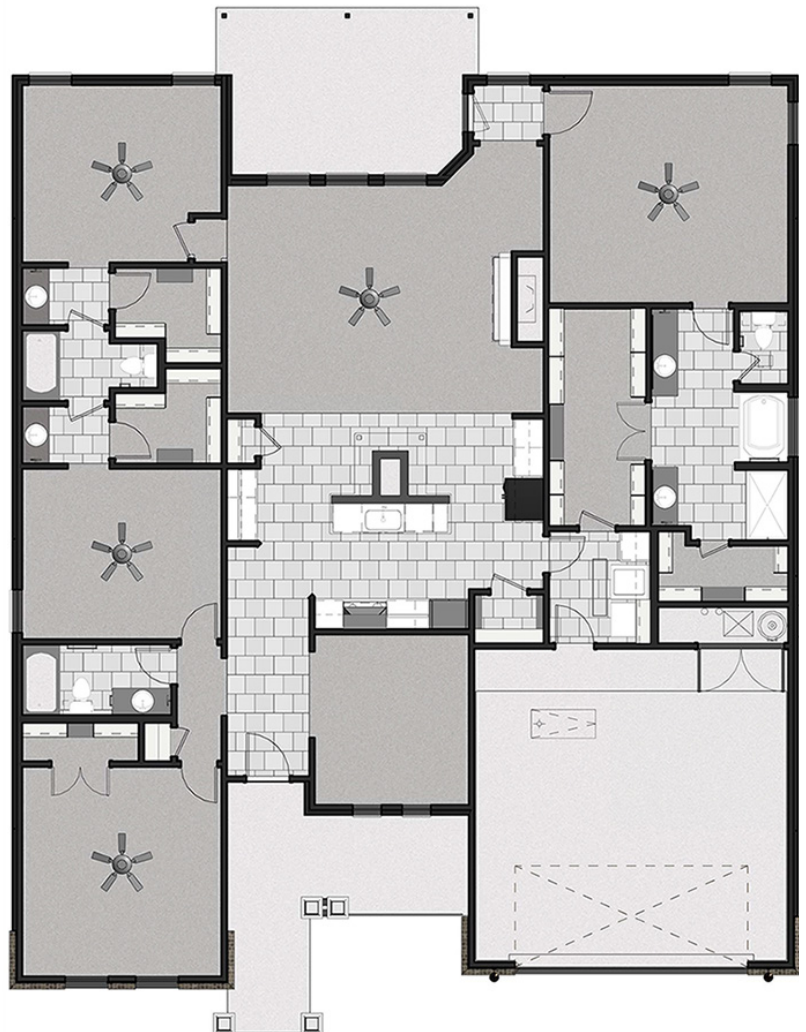
2,603 SQ FT

FEATURES

- 4 Bedrooms
- 3 bathrooms
- Two-Car Garage
- Covered Entry & Back Patio
- Large Family Area
- 8- & 10-Foot Ceilings
- Spacious Closets
- Access from Master Closet to Laundry Room
- His & Her Vanities
- Kohler® Plumbing Fixtures
- Garden Tub
- Tall Upper Cabinets in Kitchen
- Tile Backsplash in Kitchen & Bathroom



The New Lady 2603 floor plan is illustrated above, featuring brand-new craftsman-style exterior details such as gable pediments, vinyl siding, white vinyl trim, and curved windows on the garage door.



BETENBOUGH
HOMES®

Amarillo | Lubbock | Midland | Odessa

BETENBOUGH.COM   

Pictured elevation and floor plan are a rendering and may vary slightly from actual home. Bettenbough Homes reserves the right to make changes to floor plans, materials, products, features, and upgrades without notice or prior obligation. Availability of landscaping packages will depend on community. Flower bed not an option.

© Copyright 2010 Bettenbough Homes. Specifications and pricing subject to change without notification. Rev 10/18 