

FLOOR PLAN INFORMATION

The MARIE 1,645 SQ FT

FEATURES

- 3 Bedrooms
- 2 Bathrooms
- Granite in Kitchen & Bathrooms
- Spacious Living Area
- Kitchen Island
- Large Pantry
- Spacious Master Suite
- Front Porch & Covered Back Patio
- Tile Backsplash in Kitchen & Bathroom
- Kohler® Plumbing Fixtures



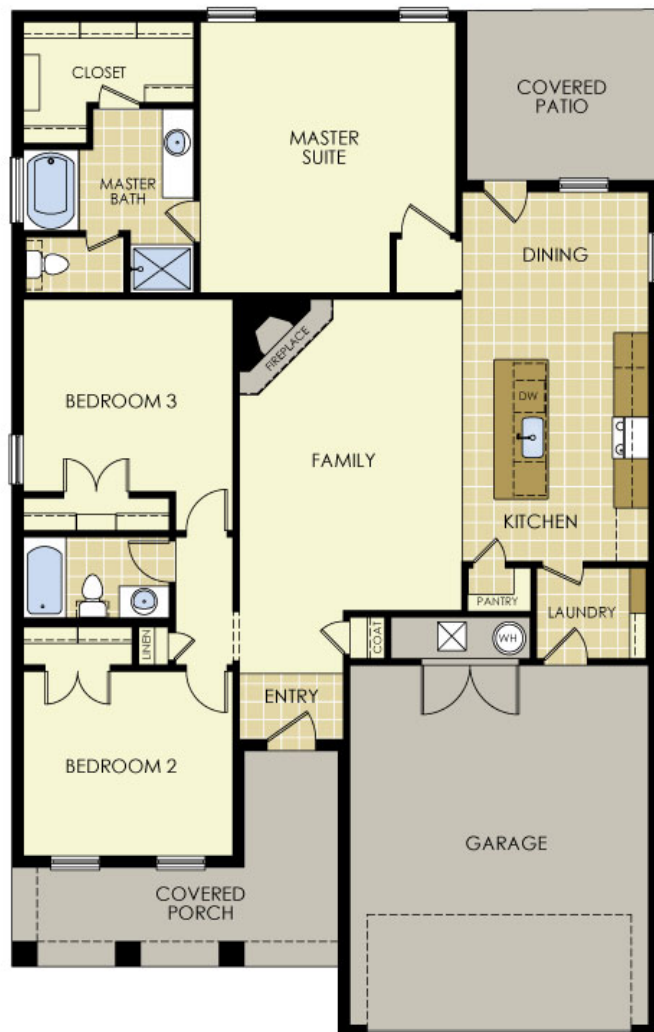
BETENBOUGH
HOMES®

Amarillo | Lubbock | Midland | Odessa

BETENBOUGH.COM   



The Marie is illustrated above with a 6/12 roof pitch, decorative coach lights and address stone.



Pictured elevation and floor plan are a rendering and may vary slightly from actual home. Bettenbough Homes reserves the right to make changes to floor plans, materials, products, features, and upgrades without notice or prior obligation. Availability of landscaping packages will depend on community. Flower bed not an option.

© Copyright 2010 Bettenbough Homes. Specifications and pricing subject to change without notification. Rev. 10 / 18 